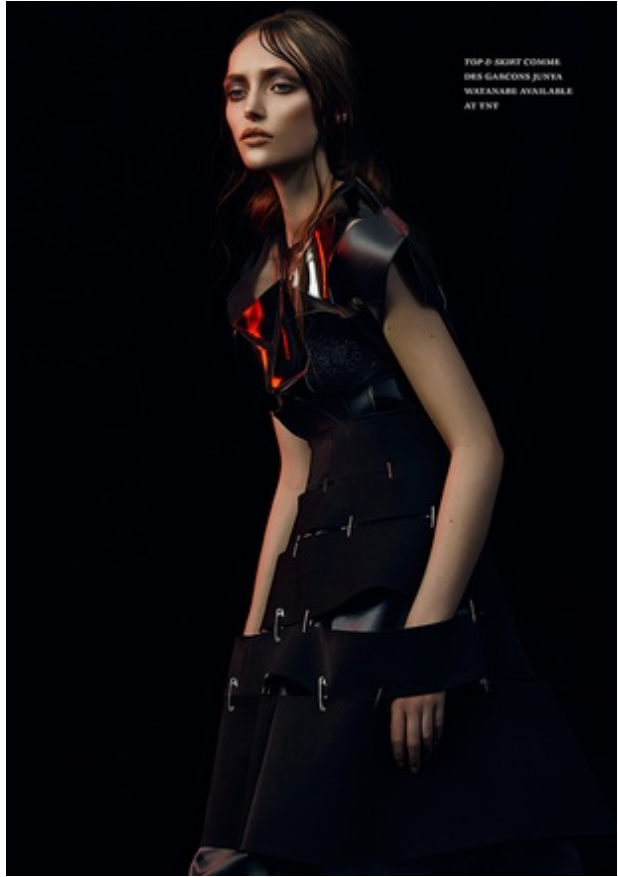




# KENLEY

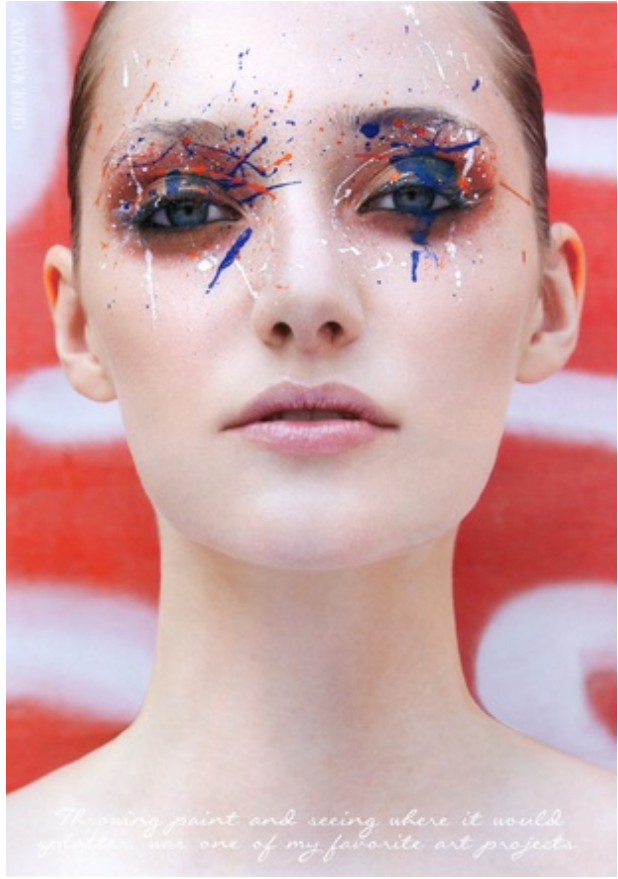
Height 5' 10" Bust 32" Waist 25" Hips 34.5" Dress Size 2 Shoe Size 9 Hair Color Brown Eye Color Blue





# KENLEY

Height 5' 10" Bust 32" Waist 25" Hips 34.5" Dress Size 2 Shoe Size 9 Hair Color Brown Eye Color Blue





# KENLEY

Height 5' 10" Bust 32" Waist 25" Hips 34.5" Dress Size 2 Shoe Size 9 Hair Color Brown Eye Color Blue





# KENLEY

Height 5' 10" Bust 32" Waist 25" Hips 34.5" Dress Size 2 Shoe Size 9 Hair Color Brown Eye Color Blue





KENLEY

Height 5' 10" Bust 32" Waist 25" Hips 34.5" Dress Size 2 Shoe Size 9 Hair Color Brown Eye Color Blue



CARVEN (top) and  
SOPHIA WEBSTER (shoes)



# Lovers Undercover

Step across this season in romantic outerwear. Drape a creamy shawl, a flash of red, or a customer favorite around you and beat the cold smaller than in style.

PHOTOGRAPHED BY FRÉDÉRIC LAGUNA | STYLED BY SKYE KELTON



TABLET  
EXTRA  
Check out our  
behind-the-scenes  
fashion shoot video.

## FRINGE FEST

Add some star power to your wardrobe with a colorful wrap or shawl. It will be your go-to piece on cool spring nights.

WRAP, TOP, FRINGE/PAISLEY DRESS, SHOES MICHAEL KORS.COM @KORS, TOP, SHAWL/WRAP (DRESS) CA, COORDINATOR (DRESS) M&S, AND SHOES



## HIPPIE CHIC

Anything embroidered or shawl-inspired — like this flowing blouse — is right in tune for spring.

TOP, DRESS, MICHAEL KORS.COM; SHOES, COORDINATOR, AND SHAWL, LORIS CURE; TOP, AND SHOES



# KENLEY

Height 5' 10" Bust 32" Waist 25" Hips 34.5" Dress Size 2 Shoe Size 9 Hair Color Brown Eye Color Blue





## KENLEY

Height 5' 10" Bust 32" Waist 25" Hips 34.5" Dress Size 2 Shoe Size 9 Hair Color Brown Eye Color Blue

