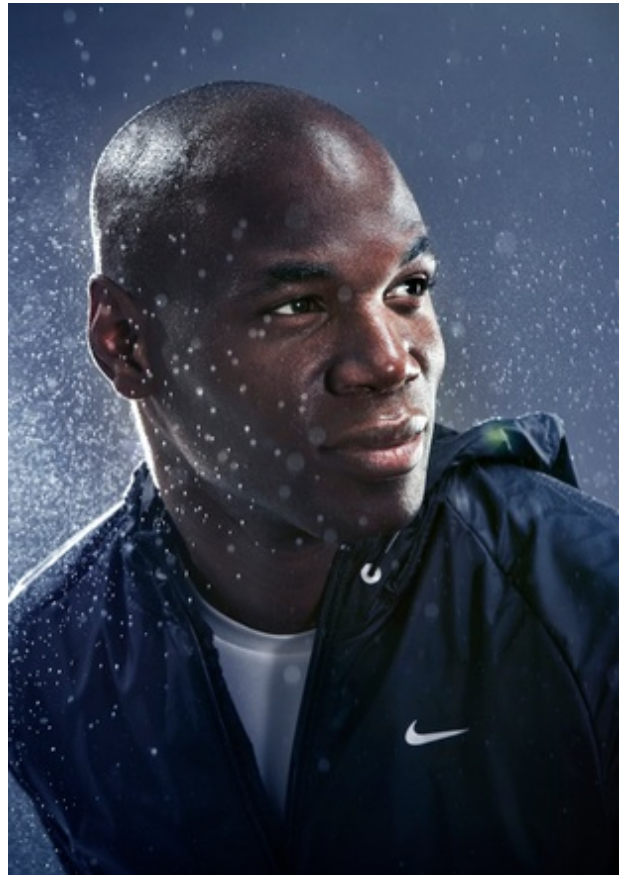




# JASON KING

Height 6' 1" Shirt 16" Suit/Coat 40" Waist 32" Inseam 32" Shoe Size 12 Hair Color Black Eye Color Brown





# JASON KING

Height 6' 1" Shirt 16" Suit/Coat 40" Waist 32" Inseam 32" Shoe Size 12 Hair Color Black Eye Color Brown



PRODUCED BY ANITA GRAYCOTT  
PHOTOGRAPHY BY EDEN ROBBINS  
STYLING BY JILL LIPONTE, JUDY INC.  
HAIR & MAKEUP BY HEATHER FOX, THE ARTIST GROUP

## THE SKINS

**UNDER STUDY** Jason pulls on adidas Clima Compression long-sleeved mock top, \$59, and shorts, \$49. The polyester and spandex combo, wicking moisture and antibacterial management, is engineered to improve muscular endurance.

**WID PLAY** Dunning Performance Tear dries the elements with permanent moisture wicking and breathability, \$199. Nike Tequn Woods Collection II Performance stretch pants, \$119, team with Nike Sphere royal blue polo, \$79.



# JASON KING

Height 6' 1" Shirt 16" Suit/Coat 40" Waist 32" Inseam 32" Shoe Size 12 Hair Color Black Eye Color Brown

Layering 101  
for maximum comfort  
and performance,  
despite the elements

# GAME

**OUTER LIMITS** Gatorade's rain top, \$179, comes with zipneck, chin guard and comfort collar, detachable sleeves and five-year waterproof guarantee. Gatorade's rain pants, \$149, features quick-dry leg length adjusters and flexible knee grommet, knee leg zips and also a five-year waterproof guarantee. Gatorade's bucket hat, \$49; fleece-lined and waterproof Pro max, \$29.95; Football II Series (lightweight technology) shoes, \$189. Available at Gatorade.com.







# JASON KING

Height 6' 1" Shirt 16" Suit/Coat 40" Waist 32" Inseam 32" Shoe Size 12 Hair Color Black Eye Color Brown



APRIL 2008 STYLE GUIDE 342 83

