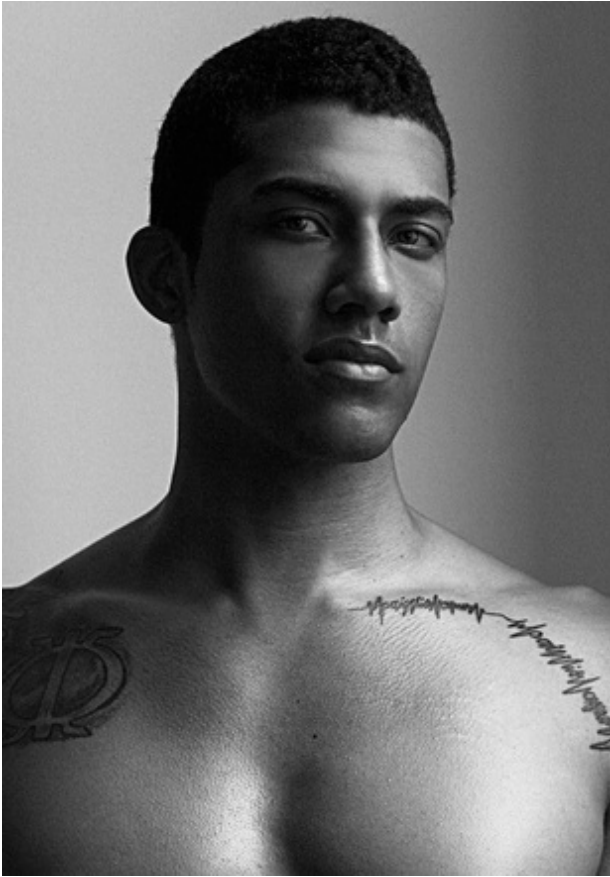




TYREE

Height 6'0" Shirt 15" Suit/Coat 40" Waist 32" Inseam 33" Shoe Size 12 Hair Color Brown Eye Color Hazel





TYREE

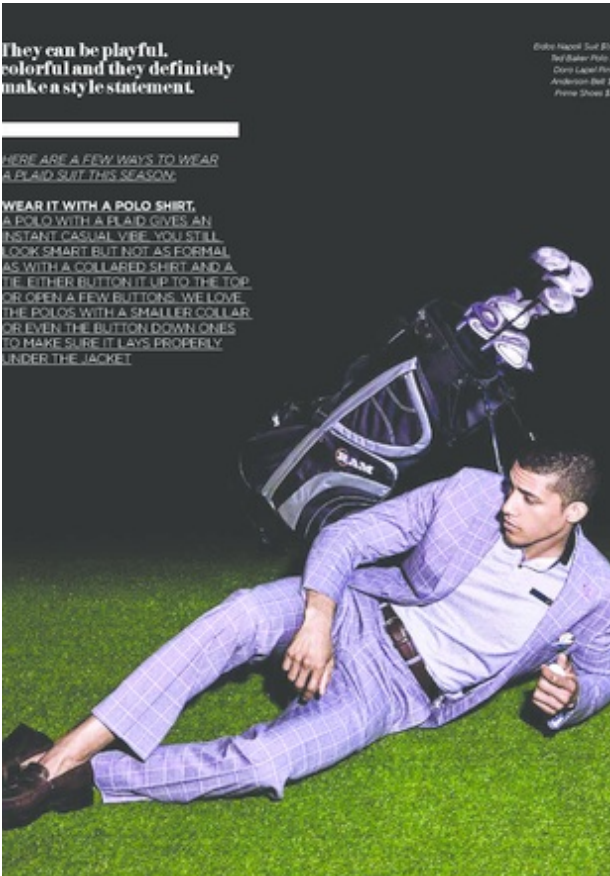
Height 6'0" Shirt 15" Suit/Coat 40" Waist 32" Inseam 33" Shoe Size 12 Hair Color Brown Eye Color Hazel





TYREE

Height 6'0" Shirt 15" Suit/Coat 40" Waist 32" Inseam 33" Shoe Size 12 Hair Color Brown Eye Color Hazel



They can be playful, colorful and they definitely make a style statement.

HERE ARE A FEW WAYS TO WEAR A PLAID SUIT THIS SEASON.

WEAR IT WITH A POLO SHIRT. A POLO WITH A PLAID GIVES AN INSTANT CASUAL VIBE. YOU STILL LOOK SMART BUT NOT AS FORMAL AS WITH A COLLARED SHIRT AND A TIE. EITHER BUTTON IT UP TO THE TOP OR OPEN A FEW BUTTONS. WE LOVE THE POLOS WITH A SMALLER COLLAR OR EVEN THE BUTTON-DOWN ONES TO MAKE SURE IT LAYS PROPERLY UNDER THE JACKET.

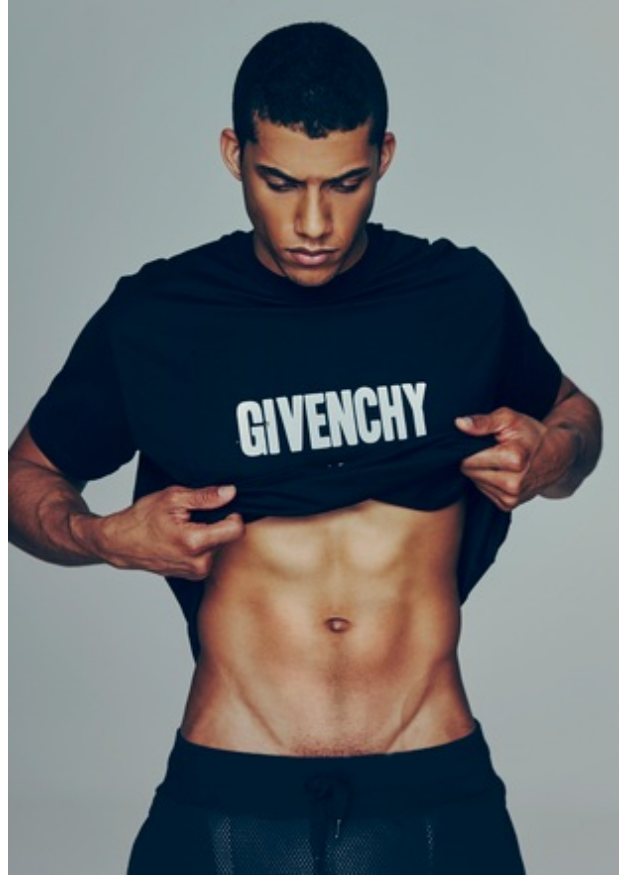
Colts Jacket Suit \$110
Tuff Baker Polo \$75
Clare Label Polo
Anderson Belt \$25
Puma Shoes \$120





TYREE

Height 6'0" Shirt 15" Suit/Coat 40" Waist 32" Inseam 33" Shoe Size 12 Hair Color Brown Eye Color Hazel





TYREE

Height 6'0" Shirt 15" Suit/Coat 40" Waist 32" Inseam 33" Shoe Size 12 Hair Color Brown Eye Color Hazel

